

# Bronze & Brass Valves

JIS 5K/10K, ASME Class 125/150/300, KITZ Type 100/125/150/300/400/600



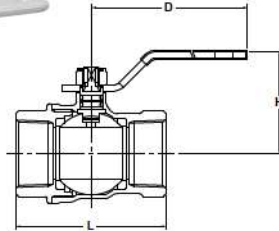
**TYPE 600**

**BRASS BALL VALVE, FULL PORT**

Bolted body and cap, Blowout-proof stem, Double O-ring stem seals, Threaded ends to ASME B1.20.1 or solder joint ends

W.O.G. non-shock 4.14 MPa (600 psi)\*, W.O.G. 150°C 1.03 MPa (150 psi)

\*Size 4: W.O.G. non-shock 2.76 MPa (400 psi), W.O.G. 150°C 0.69 MPa (100 psi)



**Materials**

Parts	Material
Body	Brass/Bronze*
Body cap	Brass/Bronze*
Stem	Brass: Nickel plated
Ball	Brass: Tin-Nickel plated (Size ¼ to 3) Stainless Steel**
Ball seat	PTFE
O-ring	FKM

\*Size 4 only \*\*Size 2½ and larger

⚠ Solder joint end valves should not be used in service where the temperature of the line fluid is higher than the softening point of the solder.

Fig. AKSZA

Fig. CSZA

• Threaded end to ASME B1.20.1 • Solder joint to ASMB 16.18



\*AKSZA only

**Dimensions**

Nominal Size	inch	¼	⅜	½	¾	1	1¼	1½	2	2½	3	4
	mm	8	10	15	20	25	32	40	50	65	80	100
L		42	42	53	60	72	84	92	110	138	167	193
L1 Solder			46	54	73	88	100	115	140	164	187	
H		37	37	40	43	50	55	65	72	100	112	131
D		70	70	80	80	110	110	150	150	200	300	300

**TYPE 600**

**BRASS BALL VALVE, FULL PORT**

Bolted body and cap, Blowout-proof stem, Double O-ring stem seals, Threaded ends to BS21

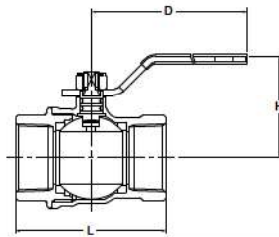
W.O.G. non-shock 4.14 MPa (600 psi), W.O.G. 150°C 1.03 MPa (150 psi)

\*Size 4: W.O.G. non-shock 2.76 MPa (400 psi), W.O.G. 150°C 0.69 MPa (100 psi)



Fig. SZA

• Threaded end to BS21



**Materials**

Parts	Material
Body	Brass/Bronze*
Body cap	Brass/Bronze*
Stem	Brass: Nickel plated
Ball	Brass: Chrome free plated (Size ¼ to 3) Stainless Steel**
Ball seat	PTFE
O-ring	FKM

\*Size 4 only \*\*Size 2½ and larger

**Dimensions**

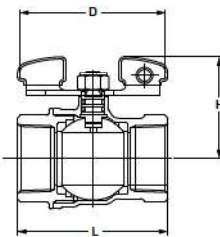
Nominal Size	inch	¼	⅜	½	¾	1	1¼	1½	2	2½	3	4
	mm	8	10	15	20	25	32	40	50	65	80	100
L		42	42	53	60	72	84	92	110	138	167	193
H		37	37	40	43	50	55	65	72	101	113	131
D		70	70	80	80	110	110	150	150	200	300	300

**TYPE 600**

**BRASS BALL VALVE, FULL PORT**

Bolted body and cap, Blowout-proof stem, Double O-ring stem seals, Threaded ends to ASME B1.20.1 or solder joint ends

W.O.G. non-shock 4.14 MPa (600 psi), W.O.G. 150°C 1.03 MPa (150 psi)



**Materials**

Parts	Material
Body	Brass
Body cap	Brass
Stem	Brass: Nickel plated
Ball	Brass: Tin-Nickel plated
Ball seat	PTFE
O-ring	FKM

⚠ Solder joint end valves should not be used in service where the temperature of the line fluid is higher than the softening point of the solder.

Fig. AKSZAW

Fig. CSZAW

• Threaded end to ASME B1.20.1 • Solder joint to ASME B16.18



\*AKSZAW only

**Dimensions**

Nominal Size	inch	¼	⅜	½	¾	1	1¼	1½	2
	mm	8	10	15	20	25	32	40	50
L		42	42	53	60	72	84	92	110
L1 Solder			46	54	73	88	100	115	140
H		35	35	41	45	54	59	75	82
D		55	55	70	70	100	100	130	130