

# Y Type Control Valves





WEYCO AUTO VALVE CO., LTD, established in 1975, is one of the leading valve manufacturers in Taiwan. With obtaining the certificate of ISO 9001:2008, Wyeco is also an OEM supplier for several companies.

#### Main Products

1. Diaphragm Actuated Control Valve
2. Cylinder Actuated Control Valve
3. Cylinder Actuated Y-type Control Valve
4. Heat medium 3-Way Control Valve
5. Manual Valve for Hyper-Cryogenics
6. Hyper-Cryogenics Emergency Shut-off Valve
7. Cylinder Actuated Ball Valve
8. Cylinder Actuated Butterfly Valve
9. Diaphragm / Cylinder Actuated Saunders Valves

Please contact us for more details

886-2-2502-5166

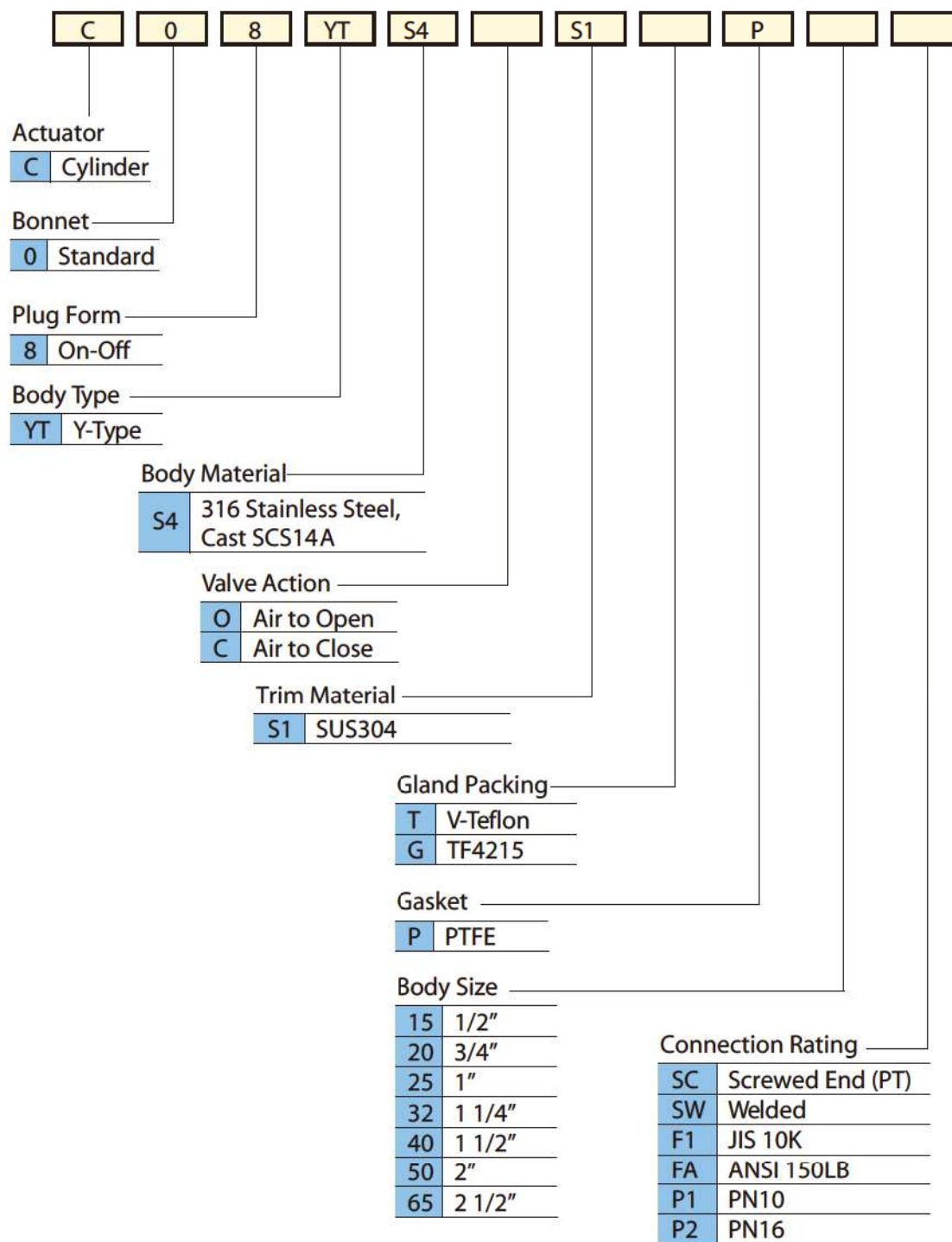
<http://www.wyeco.com.tw>

e-mail: [wyeco@wyeco.com.tw](mailto:wyeco@wyeco.com.tw)

# Y Type Control Valves



## Model Numbers



## Model : WY – C08YT

### Theory of Valve

The standard type is closed by spring – action. When the actuator is pressured, the piston and valve plate is lifted up – the valve is open.

### Features

- Optical position indicator is standard
- Suitable for contaminated flow fluid
- Optional reverse flow direction
- High flow rate
- With or without mounted pilot valve
- Small size and light weight ,easy to be used in compact area.

### Specification

- Type : Single Seated, Globe Type
- Material : SCS14A
- End Connection : Flanged End (RF)JIS10K,ANSI 150LB, PN10, PN16  
Screwed End ( PT )  
Welded End
- Bonnet : Standard ( -20°C ~ 200°C)
- Gland Packing : V-Teflon , TF4215
- Gasket : Teflon , TF4215

### Trim

- Stem : SUS304
- Valve Plug : Single Seated
- Plug Characteristics : On / Off
- Material : SUS304

### Actuator :

Type : Single Cylinder  
Cylinder Material : SUS304  
Air Supply : 3-6 kg/cm<sup>2</sup>  
Ambient Temperature : -20°C ~ +60°C

### Valve Action :

Air to open or air to Close by using direct or reverse actuator .

### Accessory :

Solenoid Valve , Limit Switch , Air Set or Others. Rate Cv Valve :

### Rate Cv Valve :

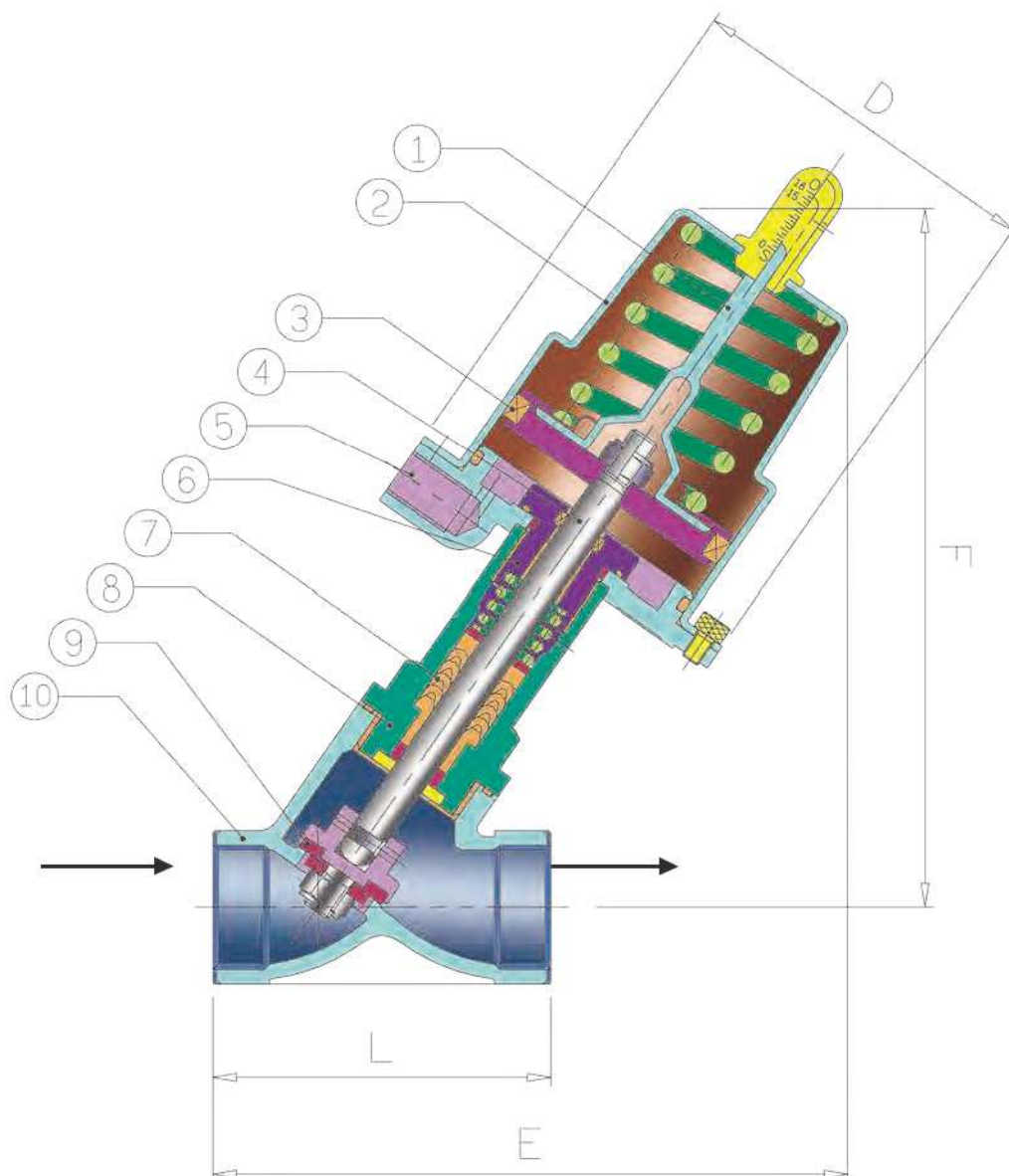
Body	mm	15A	20A	25A	32A	40A	50A	65A
Size	inch	1/2"	3/4"	1"	1 1/4"	1 1/2"	2"	2 1/2"
Stroke		13	13	15	15	18	18	23
Rated Cv		4.2	8	13	22	31	48	75

### Allowable Shut-Off Pressure

Unit : kg/cm<sup>2</sup>

Act. Size	Air Supply	15A	20A	25A	32A	40A	50A	65A
70	5 kg / cm <sup>2</sup>	10						
			10					
				7				
80	6 kg/cm <sup>2</sup>			9				
					6			
						6		
100	6 kg/cm <sup>2</sup>					9		
							9	
								6

## Model : WY – C08YT – S (Size : 1/2" ~ 2")



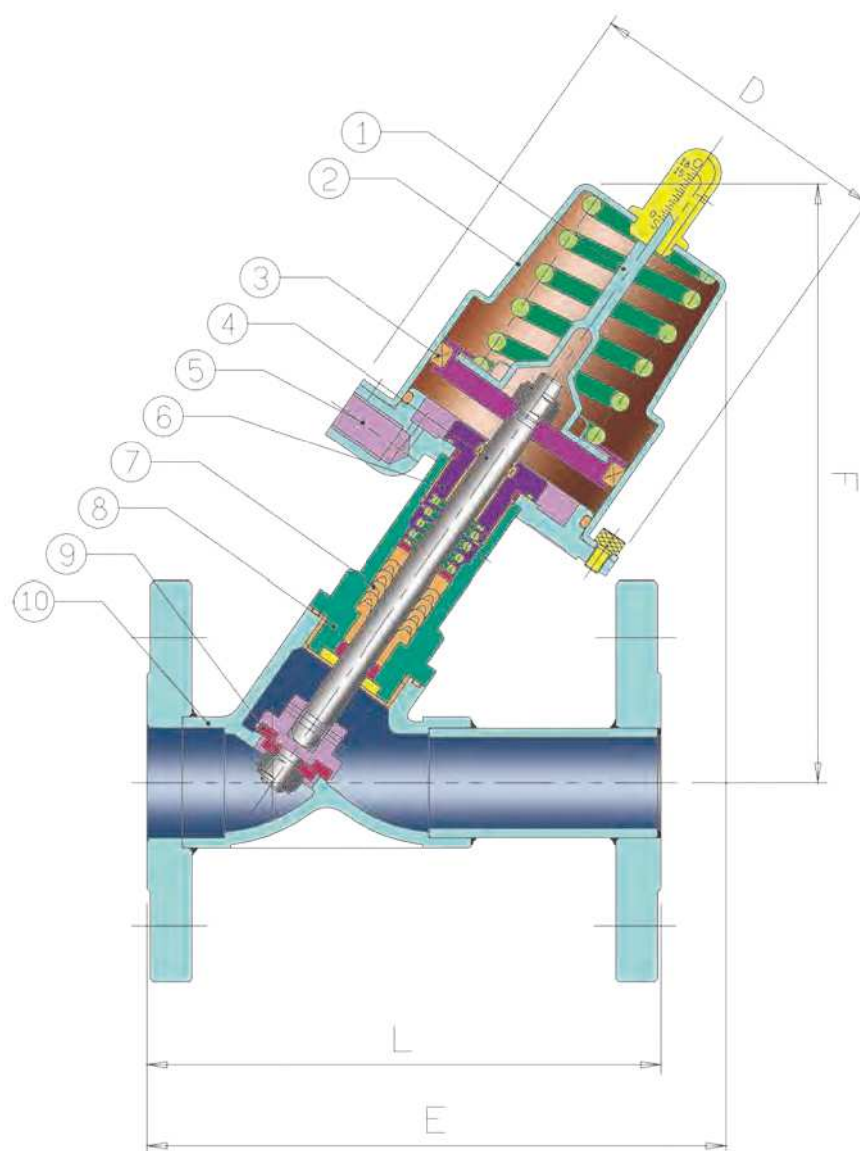
### Parts & Material

No	Part Name	Material
1	Indicating Rod	PA+Glass Fiber
2	Cover Hood	SUS304
3	Grooved Ring	NBR
4	Valve Stem	SUS304
5	Actuator Housing	SCS13
6	Gland	C3604
7	V-Packing	PTFE
8	Stem Tube	SCS13
9	Seat Ring	PTFE
10	Body	SCS14A

### Dimensions

Valve		L	E	F	D	Kg
mm	inch					
15	1/2"	65	153	170	97	1.7
20	3/4"	75	157	174	97	1.8
25	1"	90	169	186	97	2.2
32	1-1/4"	100	182	196	107	2.8
40	1-1/2"	120	187	199	107	3.1
50	2"	150	195	204	107	4.4

## Model : WY – C08YT – F (Size: 1/2" ~ 2")



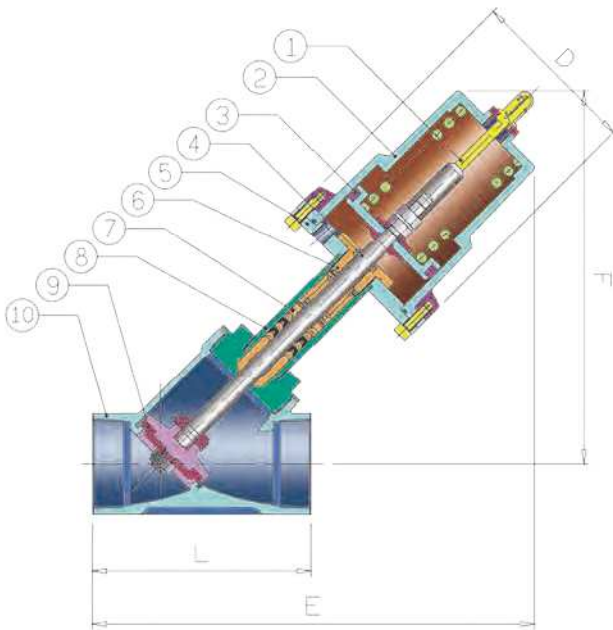
### Parts & Material

No	Part Name	Material
1	Indicating Rod	PA+Glass Fiber
2	Cover Hood	SUS304
3	Grooved Ring	NBR
4	Valve Stem	SUS304
5	Actuator Housing	SCS13
6	Gland	C3604
7	V-Packing	PTFE
8	Stem Tube	SCS13
9	Seat Ring	PTFE
10	Body	SCS14A

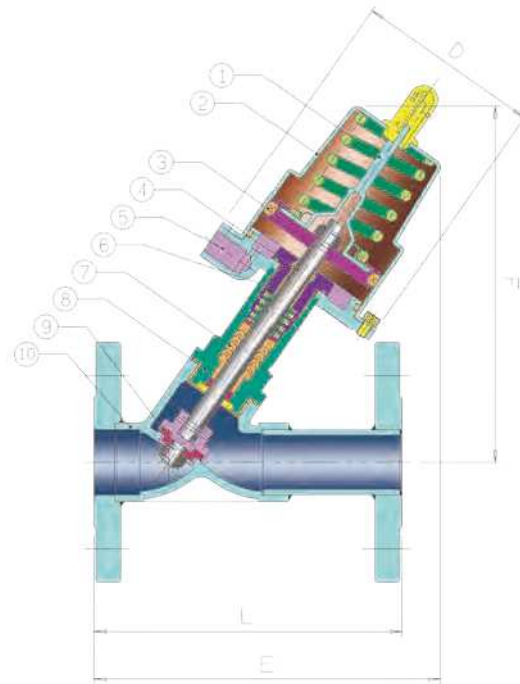
### Dimensions

Valve		L		E	F	D	Kg
mm	inch	ISO	JIS				
15	1/2"	150	150	162	170	97	2.9
20	3/4"	150	150	169	174	97	3.3
25	1"	160	160	181	186	97	4.5
32	1 1/4"	180	180	195	196	107	5.5
40	1 1/2"	200	190	200	199	107	6.2
50	2"	230	220	209	204	107	8.3

## Model : WY – C08YT – (Size: 2 1/2")



Model : C08YT-S



Model : C08YT-F

### Parts & Material

No	Part Name	Material
1	Indicating Rod	SUS304
2	Cover Hood	Aluminum Alloy 6061 T6
3	Grooved Ring	NBR
4	Valve Stem	SUS304
5	Actuator Housing	SUS304
6	Gland	C3604
7	V-Packing	PTFE
8	Stem tube	SUS304
9	Seat Ring	PTFE
10	Body	SCS14A

### Dimensions

Valve		L		E	F	D	Kg
mm	inch	ISO	JIS				
65	2 1/2"	290	230	389	312	144	18

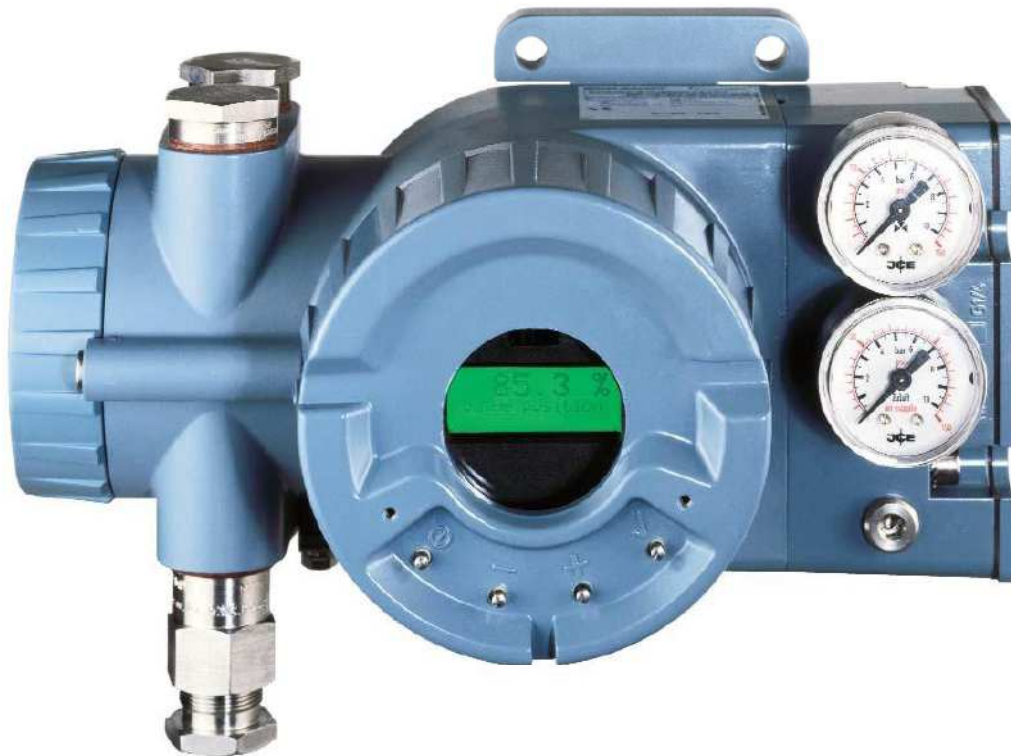
(Model : C08YT-F) JIS 10K

Valve		L	E	F	D	Kg
mm	inch					
65	2 1/2"	185	373	317	144	12

(Model : C08YT-S) Screwed End

# FOXBORO-ECKARDT SMART POSITIONER

## Universal Positioner SRD960

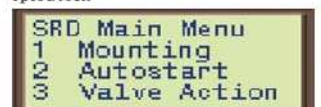


### SRD960 - Intelligent Valve Control - Ex d

- Easy to operate, menu-driven with graphical LCD
- Multilingual full text Display, backlit for easy reading
- All parameters can be configured locally by push buttons
- Advanced Diagnostics for Valve predictive maintenance
- Premium Diagnostics for Valve Footprint, On-Line Friction
- Certified for Safety Applications up to SIL 3
- Partial Stroke Test (PST) for emergency shutdown applications
- ATEX and FM aproval for EEx d - “ flameproof ”/“explosionproof”
- HART Protocol
- PROFIBUS-PA
- FOUNDATION Fieldbus H1 with PID, AO, 2xDI, DO, IS, OS, AI, MAI function blocks and LAS functionality
- Easy mounting to all linear and rotary actuators
- Options:
  - Limit switches or position transmitter
  - Integrated gauges and volume boosters



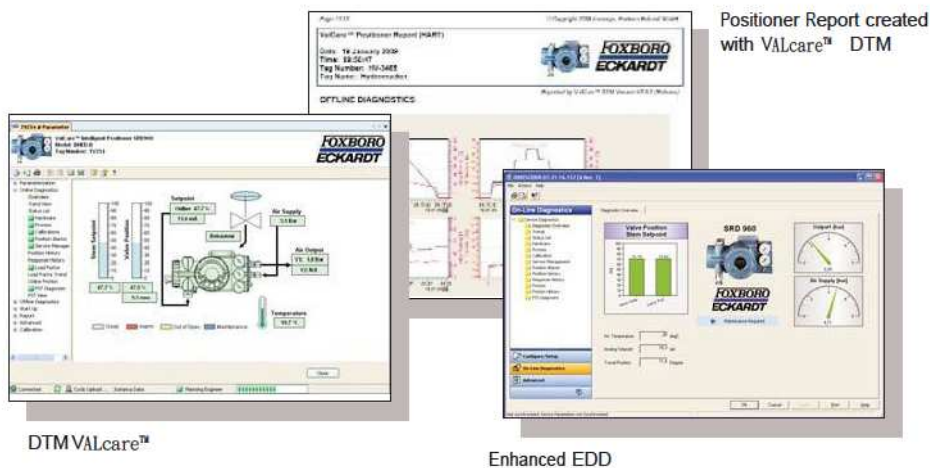
Operation



Configuration



Diagnosis report



Example for mounting on rotary actuators.

## Technical Data

The SRD960 offers the most advanced technology available on the market today. This includes among others an infrared interface for wireless operation and configuration, a multi-lingual full-text graphic LCD and an availability with the choice of all in the process automation applied communication protocols. It offers enhanced applications and methods to analyze recorded stroke data. All the diagnostics features can be easily configured and display by the Positioner DTM (VALcare). The Positioner DTM enables to edit a complete "health report of the valve with all data of configuration and diagnostics. The SRD960 has also the capability to control a Partial Stroke Test (PST) that offers operators a tool to identify the trouble-proof function of ESD (Emergency Shut Down) valves.

Advanced Diagnostics		<ul style="list-style-type: none"> <li>Autostart</li> <li>Autodiagnostic</li> <li>Alarm Output for Switching (with Optionboard)</li> <li>Status List acc. NE107</li> <li>Response History</li> </ul>
Premium Diagnostics		<ul style="list-style-type: none"> <li>On Line Friction</li> <li>Ramping Signature</li> <li>Valve Footprint</li> <li>PST Predictive Maintenance</li> <li>Custom Characterization</li> <li>Alarm Management</li> <li>Position History</li> <li>Stepping Signature</li> <li>Sensitivity Signature</li> <li>PST</li> </ul>
SRD960	with Communication	HART Setpoint 4-20 mA Load 420 Ohm PROFIBUS PA and FOUNDATION Fieldbus H1 Base current 10.5 mA ± 0.5 mA + FISCO FDE (Fault Disconnection Electronic) certified DTMs for HART, Profibus PA and FF H1
Display		Multilingual Graphical LCD with full text display
Air Supply		1.4 to 6 bar (20 to 90 psig), or 1.4 to 7 bar (20 to 105 psig) with "spool valve"
Stroke Range		8 to 260 mm (0.3 to 10.2 in)
Angle of Rotation		up to 95 degree angle, optional up to 300 degree
Protection Class		IP 66 or NEMA 4X
Electrical Classification		ATEX II 2 G EEx d T4 / T6 (flameproof) FM Cl. I, Div. 1, Groups A, B, C, D (explosionproof)
Electrical Connection		M20 x 1.5 or 1/2-14 NPT (others with Adapter AD...)
Pneumatic Connection		G1/4 or 1/4-18 NPT
Ambient Temperature		-40 to +80 °C (-40 to +176 °F)
Weight		2.7 kg / 3.7 lbs (double acting: 3 kg / 4.4 lbs)
Optional Features		Inductive Limit Switches (2- or 3-wire) Mechanical Switches (Micro Switches) Position Transmitter (4 to 20 mA) Binary Inputs or Binary Outputs or Binary Inputs/Outputs dedicated to SIS logic solvers* External potentiometer (*e.g. TRICONEX)
Attachment to linear actuators		acc. to IEC 534 part 6 (NAMUR) and VDI/VDE 3847
rotary actuators		acc. to VDI/VDE 3845 and VDI/VDE 3847
any other linear or rotary actuator by means of extensive attachment kit offering		

# Intelligent Valve Positioner SRD991

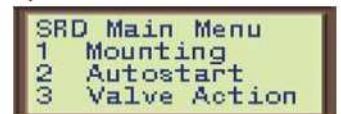


## SRD991 – Intelligent Valve Control

- Easy to operate, menu-driven graphical LCD
- Multilingual full text display, visible also with cover closed
- All parameters can be configured locally by push buttons
- Advanced Diagnostics for Valve predictive maintenance
- Premium Diagnostics for Valve Footprint, On-Line Friction
- Suitable for safety applications up to SIL 3
- Partial Stroke Test (PST) for Emergency Shutdown applications
- HART-Protocol
- PROFIBUS-PA
- FOUNDATION Fieldbus H1 with PID, AO, 2xDI, DO, IS, OS, AI, MAI function blocks and LAS functionality
- Easy mounting to all linear and rotary actuators
- Options:
  - Housing in stainless steel
  - Limit switches and position transmitter
  - Gauge manifolds and volume boosters
  - Pressure sensors for supply air and outputs



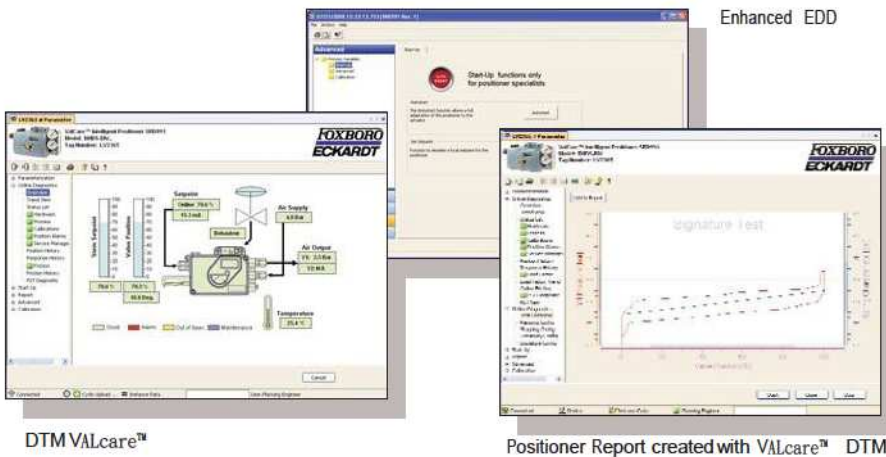
Operation



Configuration



Diagnosis report



Example for mounting on rotary actuators.

## Technical Data

The SRD991 offers the most advanced technology available on the market today.

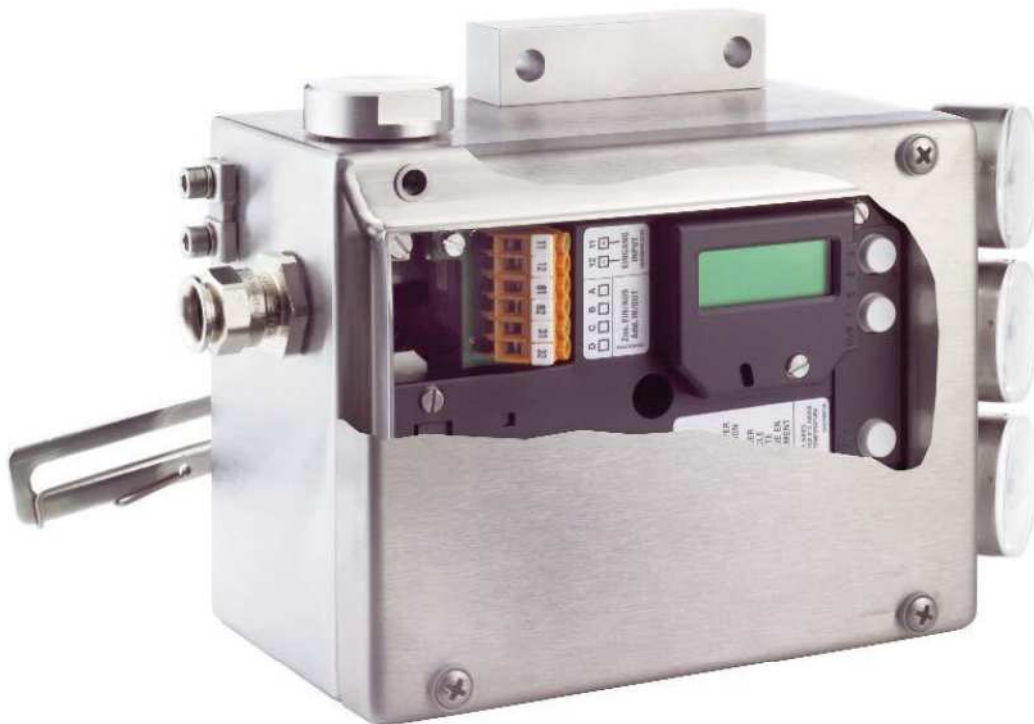
This includes among others an infrared interface for wireless operation and configuration, a multi-lingual full-text graphic LCD and an availability with the choice of all in the process automation applied communication protocols. It offers enhanced applications and methods to analyze recorded stroke data.

All the diagnostics features can be easily configured and display by the Positioner DTM (VALcare). Moreover, the Positioner DTM enables to edit a complete "health" report of the valve with all data of configuration and diagnostics.

The SRD991 has also the capability to control a Partial Stroke Test (PST) that offers operators a tool to identify the trouble-proof function of ESD (Emergency Shut Down) valves.

Advanced Diagnostics		<ul style="list-style-type: none"> <li>Autostart</li> <li>Autodiagnostic</li> <li>Alarm Output for Switching (with Optionboard)</li> <li>Status List acc. NE107</li> <li>Response History</li> </ul>
Premium Diagnostics		<ul style="list-style-type: none"> <li>On Line Friction</li> <li>Ramping Signature</li> <li>Valve Footprint</li> <li>PST Predictive Maintenance</li> <li>Custom Characterization</li> <li>Alarm Management</li> <li>Position History</li> <li>Stepping Signature</li> <li>Sensitivity Signature</li> <li>PST</li> </ul>
SRD991	without Communication	Setpoint 4-20 mA Load 300 Ohm
	with Communication	HART Setpoint 4-20 mA Load 420 Ohm PROFIBUS PA and FOUNDATION Fieldbus H1 Base current 10.5 mA ± 0.5 mA + FISCO FDE (Fault Disconnection Electronic) certified DTMs for HART, Profibus PA and FF H1
Display		Multilingual Graphical LCD with full text display Mechanical Indicator (Standard)
Air Supply		1.4 to 6 bar (20 to 90 psig), or 1.4 to 7 bar (20 to 105 psig) high air capacity version
Stroke Range		8 to 260 mm (0.3 to 10.2 in) with standard lever
Angle of Rotation		up to 95 degree angle (optional up to 300 degree)
Protection Class		IP 66 or NEMA 4X
Electrical Classification	ATEX	"Intrinsic safety" II 2 G EEx ia IIC T4 / T6 "intrinsic safety for dust" II 1 D Ex iaD 20
	FM / CSA	"Intrinsic safety" Class I, Div 1, Groups A, B, C, D
Electrical Connection		M20 x 1.5 or 1/2-14 NPT (others with Adapter AD...)
Pneumatic Connection		G1/4 or 1/4-18 NPT
Ambient Temperature		-40 to +80 °C ( -40 to +176 °F)
Weight		1.7 kg / 3.7 lbs (double acting: 2 kg / 4.4 lbs)
Optional Features (plug & play)		<ul style="list-style-type: none"> <li>Inductive Limit Switches (2- or 3-wire)</li> <li>Mechanical Switches (Micro Switches)</li> <li>Position Transmitter (4 to 20 mA)</li> <li>Binary Inputs or Binary Outputs or</li> <li>Binary Inputs/Outputs dedicated to SIS logic solvers*</li> <li>External potentiometer (*e.g. TRICONEX)</li> </ul>
Attachment to linear actuators		acc. to IEC 534 part 6 (NAMUR) and VDI/VDE 3847
rotary actuators		acc. to VDI/VDE 3845 and VDI/VDE 3847
any other linear or rotary actuator by means of extensive attachment kit offering		

# Stainless Steel Housing for Positioners SRD991-SRI990



## Rugged and compact design

Positioner in a rugged stainless steel housing and an extensive choice of electronic boards from SRI990 or SRD991.

Electronic board from the SRD991 digital valve positioner:

- Easy to operate, menu-driven graphical LCD
- Multilingual full text display
- HART Protocol
- PROFIBUS-PA
- FOUNDATION Fieldbus H1 with PID, AO, 2xDI, DO, IS, OS, AI, MAI function blocks and LAS functionality

Electronic board from the SRI990 analog valve positioner:

- Analog valve control with fast control behavior
- Electrical adaption of zero and span by potentiometers

The modular concept of the positioners SRI990 - SRD991:

- Easy mounting to all linear and rotary actuators

**HART**  
COMMUNICATION PROTOCOL

**EDD**

**F**  
Fieldbus  
FOUNDATION

**PROFI**  
**BUS**

**4-20 mA**

**IA**  
Intelligent  
Automation  
Series

**FDT**  
FOUNDATION

**87.5 %**  
Valve position

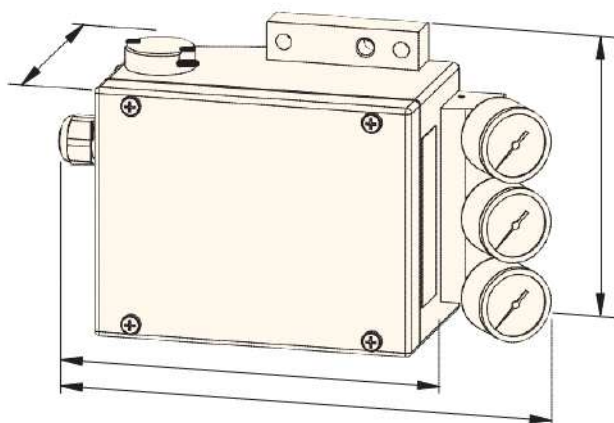
Operation

SRD Main Menu  
1 Mounting  
2 Autostart  
3 Valve Action

Configuration

**84.6 %**  
Valve position  
Maintenance

Diagnosis report



Example for mounting on rotary actuators.

### Technical Data

Special corrosion resistant design for offshore applications and for food and beverage industries.

#### How to order

Select option "-Z" in SRI990 or SRD991 model code.

The SRD991 offers the most advanced technology available on the market today.

This includes among others a multi-lingual full-text graphic LCD and an availability with the choice of all in the process automation applied communication protocols. It offers enhanced applications and methods to analyze recorded stroke data.

The advanced diagnostic can be partially shown on the local LCD of the positioner or fully on a PC or a DCS workstation like IA Series System thanks to DTM based software VALcare.

<b>- Stainless Steel Housing</b>	
Material	Stainless Steel 1.4404 / 316, 1.25 mm
Protection class	IP 66 acc. to EN 60529
Impact resistance	7 Joule acc. to EN 50014
Seals	VMQ (Silicone)
Weight (complete positioner)	3.5 kg
Pneumatic connection	1/4-18 NPT on manifold, prepared for gauges (option)
Electrical Connection	M20 x 1.5 or 1/2-14 NPT (others with Adapter AD...)
<b>- with SRD991 electronic Intelligent</b>	
	Autostart with self calibration
	Self-diagnostics
	Advanced diagnostics for valve predictive maintenance
	Multilingual Graphical LCD with full text display
	Configuration of characteristic curves
	Travel-stop and cut-off functions
	without Communication
	Setpoint 4-20 mA
	Load 300 Ohm
	with Communication
	HART
	Setpoint 4-20 mA
	Load 420 Ohm
	PROFIBUS PA and FOUNDATION Fieldbus H1
	Fieldbus Protocol acc. to IEC 1158-2 (FISCO)
	Base current 10.5 mA ± 0.5 mA
	FDE (Fault Disconnection Electronic)
Optional Features (plug & play)	Position Transmitter (4 to 20 mA)
	Binary Inputs or Binary Outputs or
	External potentiometer
<b>- with SRI990 electronic Analog</b>	
	Setpoint 4 to 20 mA
	Load 300 Ohm
Characteristic of setpoint	linear
DIP switches for	Direction of rotation, Signal range, Split range ...
<b>- General technical data</b>	
Air Supply	1.4 to 7 bar (20 to 105 psig)
Stroke Range	8 to 260 mm (0.3 to 10.2 in) with standard lever
Angle of Rotation	up to 95 degree angle (optional up to 300 degree)
Electrical Classification	ATEX "Intrinsic safety" I 2 G EEx ia IIC T4 / T6
Ambient Temperature	-40 to +80 °C ( -40 to +176 °F)
Attachment to linear actuators	acc. to IEC 534 part 6 (NAMUR) and VDI/VDE 3847
rotary actuators	acc. to VDI/VDE 3845 and VDI/VDE 3847
any other linear or rotary actuator by means of extensive attachment kit offering	



**WYECO AUTO VALVES CO., LTD**

### Taipei Office

TEL : 886-2-2502-5166 (REP)

FAX : 886-2-2501-2863

OFFICE : (10482) 4F, NO.98, SEC.3, CHIEN KUO  
NORTH RD., TAIPEI, TAIWAN

### Taoyuan Factory

TEL : 886-3-324-5116~7 / 886-3-324-4056~8

FAX : 886-3-324-5196

FACTORY : (33841) NO.6, LANE 2, SEC. 3, SHANLIN RD.,  
LUZHU SHIANG, TAOYUAN COUNTY, TAIWAN

### Mailiao Factory

TEL : 886-5-691-7552 / 886-5-691-7991

FAX : 886-5-691-5618

FACTORY : (63861) RM.4, NO.1-150, SANSHENG VIL.  
ZHONGSHAN RD., MAILIAO TWONSHIP,  
YUNLIN COUNTY, TAIWAN

### Kaohsiung Factory

TEL : 886-7-373-5236~8

FAX : 886-7-373-5239

FACTORY : (81465) NO.293-2, FENGREN RD.,  
RENWU DIST., KAOHSIUNG CITY, TAIWAN

### Weizhuang Trade (Shanghai) Co., Ltd.

TEL : 86-21-5443-6001

FAX : 86-21-5443-6860

ADD : (201109) NO.2988, HUMIN RD., MINHANG DISTRICT,  
SHANGHAI, PRC



0409

Professionally designing, manufacture, maintenance, modification, CV testing, assembly consultant, and chemical process for control valve.

<http://www.wyeco.com.tw>

e-mail: [wyeco@wyeco.com.tw](mailto:wyeco@wyeco.com.tw)